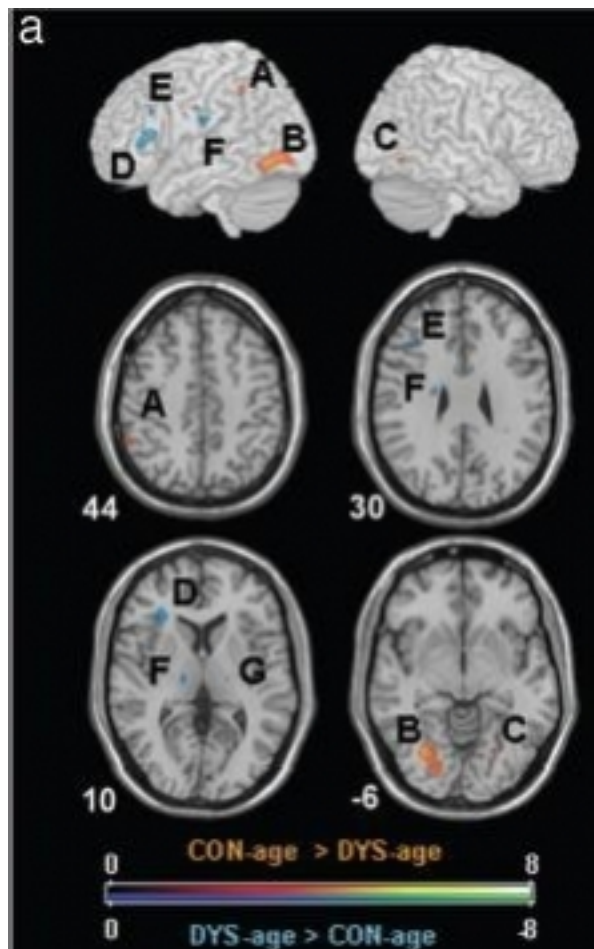


01 March, 2007



Dr WT Siok, PI of the State Key Laboratory, coauthored a paper on brain anatomical abnormalities recently published in PNAS

### FUNCTIONAL AND MORPHOMETRIC BRAIN DISSOCIATION BETWEEN DYSLEXIA AND READING ABILITY

Clue to cause of dyslexia - Brain imaging has helped researchers to locate the brain regions that might cause dyslexia.